



Customisable Commercial Furniture

Unique to you and your space



eCLIPse
— FURNITURE —



I'm Customisable

...because no two venues are the same

Off-the-shelf solutions are perfect for some projects, but when you want to make a space your own, choosing furniture that really embodies your brand can make a big difference.

Don't just furnish a space, define it

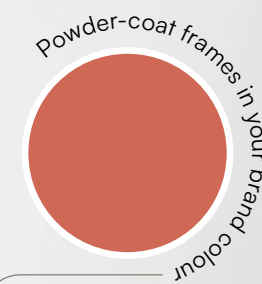
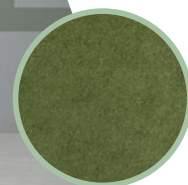
Off-the-shelf solutions are a great choice for hospitality venues, but now you can complement stock products with custom furniture that really embodies your brand and makes the space your own.

We've chosen some of our most popular commercial furniture and have introduced customisable options that will let you make it one of a kind. Whether it's upholstery style, fabric selection, leg colour, or table edge profile, the choices you make will elevate your space and tell your guests that you're confident in your brand and what you have to offer.

“

Custom furniture shows your guests that you've thought about every little detail.

”



How it works

Custom furniture is created on a project-by-project basis and managed by our experienced sales team. To get the ball rolling, simply get in touch and we can arrange a call to find out exactly what you are looking for. As well as the furniture that's highlighted in this brochure, we have an extensive range of seating, table tops and bases that can be customised to suit you.

We're happy to make creative suggestions, collaborate with a designer, or work to a strict brief. If you're looking for a COM (customer's own material) order, we're able to purchase your chosen fabric on your behalf as long as it meets with industry regulations and is CRIB5 certified.

Explore our customisable collections and get ready to connect with your customers through beautifully crafted furniture.



Indoor Seating

I'm Customisable... from colour to character

Discover the difference that customisable seating can make to your interiors. A perfectly placed pattern, pop of vibrant fabric, or powder-coated frame that matches your brand colour will give your venue a distinctive, design-led look.



I'm customisable

Tavo Collection

A collection of industrial-inspired chairs and stools that embrace both form and functionality. Both the upholstered and wooden versions of Tavo have a cool, retro look thanks to their Mid-Century utilitarian design and slim but strong, tubular metal frames.



See page 35 for technical specifications



How you can customise Tavo:



Fabric Choice

Choose any contract-grade fabric for an 'all over' design or mix & match different materials on one product.

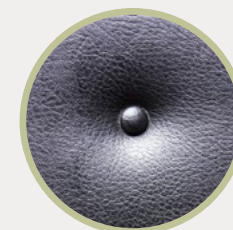


Wood Finish

Select from our ten standard wood colours or four Tavo stock stains.

Upholstery Styles

Add interest with a choice of upholstery styles: plain, button-back, diamond stitch, or ribbed.



Frame Colour

Powder-coat the metal frame with your choice of any RAL colour.



Finishing Touches

The details make all the difference - add piping, contrast stitching, or decorative studding.



Tavo Side Chair

The popular Tavo Side Chair is easy to make your own with endless customisable options. Will you go classic with a neutral frame and a pared-back pattern or make it modern with a bold print and striking frame colour.



Fabrics

To complement the stunning copper frame, we chose a burnt orange fabric and added an abstract pattern on the back. To create interest, we placed two self-covered buttons on the backrest.

Design Details

Product: Tavo Bar Stool

Vibe: Abstract Warmth



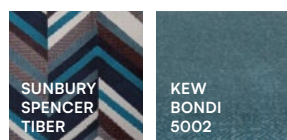
Tavo Armchair

With its sleek industrial styling, the Tavo Armchair is the perfect piece of furniture to customise. Choose from a wooden or upholstered seat and back or mix it up and opt for a combination of the two.



Fabrics

We decided on cool tones for the chair, upholstering the seat and back in recycled blue fabric and contrasting on the outer back with a Mid-Century style chevron pattern in icy blues and neutrals.



Frame

We powder-coated the frame of the chair with a classic matte black. It brings out the darker stripes in the patterned fabric and is a nod to the practical, industrial-inspired design of the furniture.

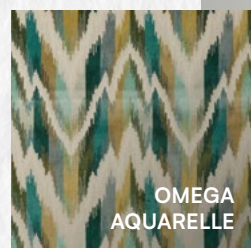
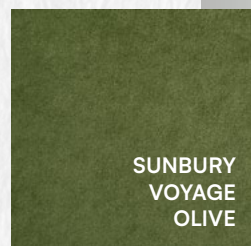
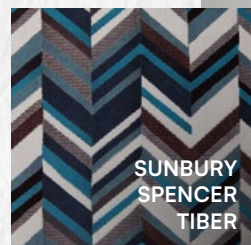
Design Details

Product: Tavo Armchair

Vibe: Retro Cool



See page 35 for technical specifications



*natural woods emulate the sandy tones
of coastal landscapes*

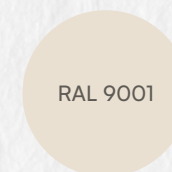
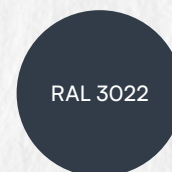


*matte or brushed
silver will add
understated elegance*

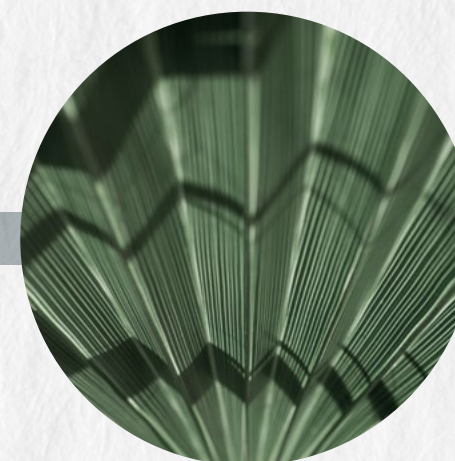


colour mood COASTAL TONES

Shades of the seashore come together to create a fresh, breezy colour palette that's calming and serene. Combine sandy neutrals with cool ocean tones of blue and green and mix with natural materials like marble and pale wood.



Our Black Marble
Extrema Table top will
add natural beauty to
a palette of coastal tones





I'm customisable

Style Stools

Style Stools are just that - stylish seating with a hint of vintage chic. With a neatly upholstered seat pad and a minimalist metal frame with footrest, the Style Stool is the perfect blank canvas on which to stamp your identity.



How you can customise Style:

Fabric Choice

Choose any contract-grade fabric for an 'all over' design or mix & match different materials on one product.

Upholstery Styles

Add interest with a choice of upholstery styles: plain, button-back, diamond stitch, or ribbed.

Frame Colour

Powder-coat the metal frame with your choice of any RAL colour.

Finishing Touches

The details make all the difference - add piping, contrast stitching, or decorative studding.



Design Details

Product: Style Stool

Vibe: Colour Drenching

Fabric

We chose a stunning light blue shade with which to powder-coat the frame. The pastel colour contrasts beautifully with the rich velvet seat.

Frame

For the upholstered seat pad of the bar stool, we opted for a gorgeous sky-blue velvet. The jewel-like shade radiates elegance, and the plush texture of the fabric adds a luxurious edge.



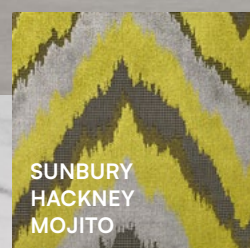
See page 35 for technical specifications



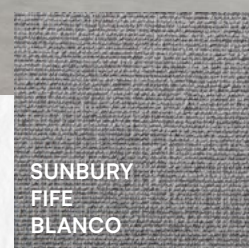
Cool grey tones will work harmoniously with our Extrema Table Top in textured Metallic Anthracite



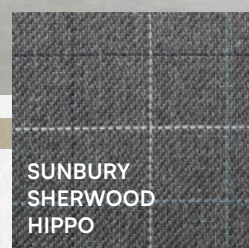
SEKERS
PUEBLA
PENGUIN



SUNBURY
HACKNEY
MOJITO



SUNBURY
FIFE
BLANCO



SUNBURY
SHERWOOD
HIPPO

the lightness of Carrara marble will lift cool shades of grey



colour mood COOL GREYS

Keep it cool with icy shades of grey. These contemporary neutrals create a sophisticated base which can be brought to life with a splash of citrus yellow or similar punchy tone. Add depth with black and lighten the look with silver or white.

RAL 7035

RAL 7037

RAL 1016

RAL 7024



a pop of lemon yellow will add a splash of sunshine



I'm customisable

Selma Armchair

With graceful organic curves, the Selma Armchair combines modern elegance and exceptional comfort. Featuring a deep padded seat, wraparound armrests, and tapered wooden legs, the contemporary armchair would look great in any choice of fabric.



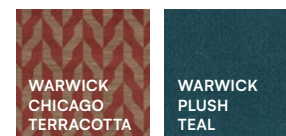
Design Details

Product: Selma Armchair

Vibe: Jewel Tones

Fabrics

We've given the armchair a classic look with a twist by upholstering in rich jewel tones. We chose a bold pattern for the seat and outer back and lined the inner back with a deep teal velvet.



How you can customise Selma:

Fabric Choice

Choose any contract-grade fabric for an 'all over' design or mix & match different materials on one product.

Upholstery Styles

Add interest with a choice of upholstery styles: plain, button-back, diamond stitch, or ribbed.

Wood Finish

Select legs in one of our ten standard wood colours, from whitewash to dark wenge.

Finishing Touches

The details make all the difference - add piping, contrast stitching, or decorative studding.



See page 35 for technical specifications



View full range - eclipsefurniture.co.uk

Call our experts - 01452 336 520



 I'm customisable

Darwen Lounge Armchair

The ultimate in retro-inspired style, the Darwen Lounge Armchair combines Mid-Century looks with modern comfort and craftsmanship. The beautifully crafted beech frame and plush upholstery create a distinctive look that would complement any interior style.

How you can customise Darwen:



Fabric Choice

This can be an 'all over' design, or you can go wild and have different fabrics on the seat, and inner and outer back.



Upholstery Styles

Add interest with a choice of upholstery styles: plain, button-back, diamond stitch, or ribbed.



Finishing Touches

The details make all the difference - add piping, contrast stitching, or decorative studding.



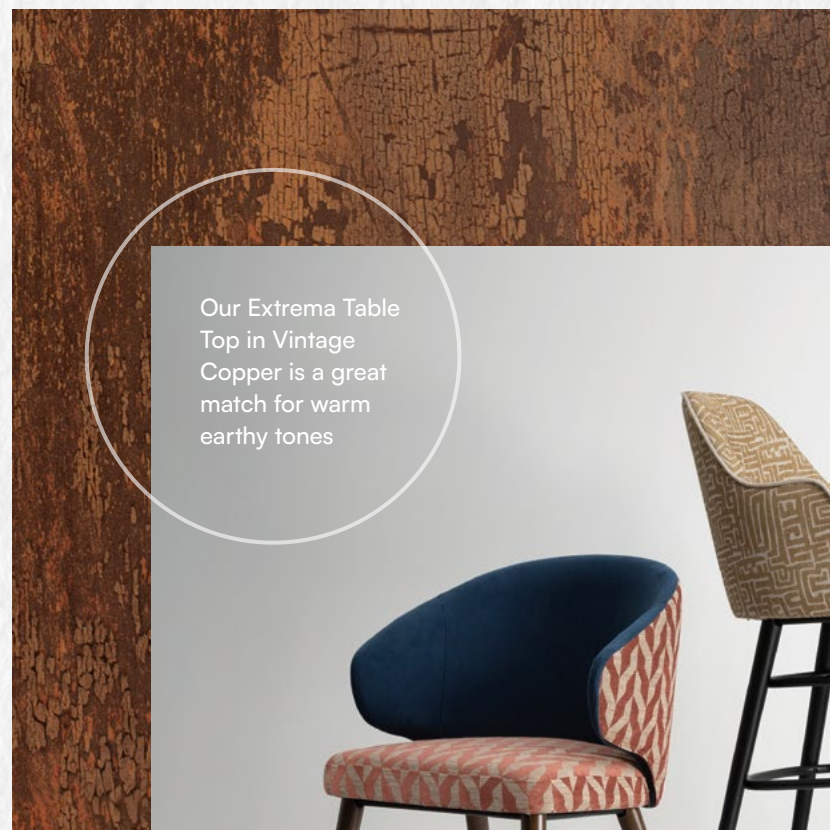
Frame Colour

Select from our ten standard wood colours, from whitewash to dark wenge.



See page 35 for technical specifications



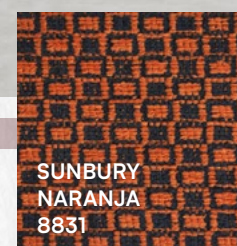
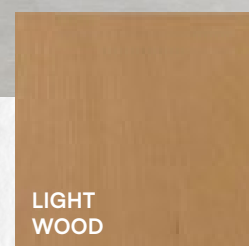
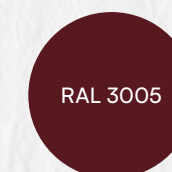
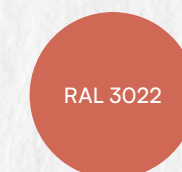


Our Extrema Table Top in Vintage Copper is a great match for warm earthy tones

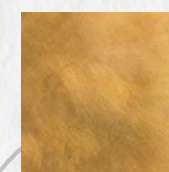
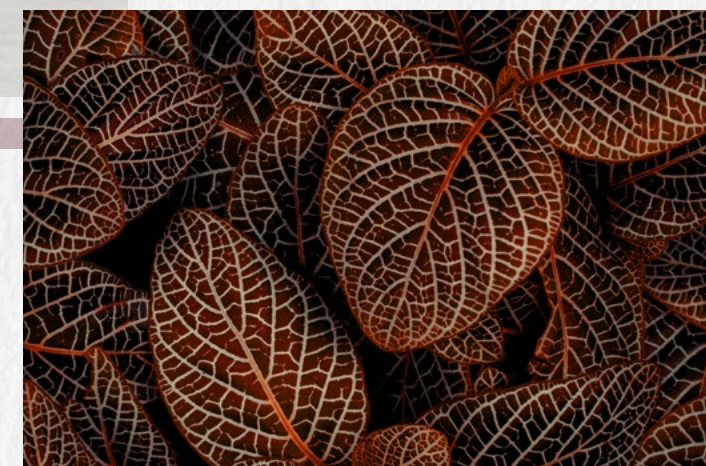


colour mood EARTHY SHADES

For a look that's rich and inviting, be inspired by shades from nature. A palette of warm neutrals, earthy terracotta, olive green, and deep burgundy along with organic patterns and textures will evoke cosy autumnal days.



dark woods are the perfect backdrop for sunset shades



brass and other tarnished metals add a touch of vintage glamour



I'm customisable

Aztec Collection

Simplicity meets style with the Aztec collection. The classic designs feature elegant proportions and subtle curves, finished off with solid beech legs. The Aztec chairs or sofa make a great foundation on which to create your perfect customised look.



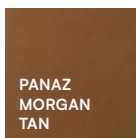
See page 35 for technical specifications



Aztec Lounge Armchair

Fabric Choices

We've embraced neutrals to give the armchair a cosy, classic look. To bring it up to date we've contrasted a sophisticated faux leather in tan with a monochrome pattern with a subtle texture.



How you can customise Aztec:



Fabric Choice

This can be an 'all over' design, or you can go wild and have different fabrics on the seat, and inner and outer back.



Upholstery Styles

Add interest with a choice of upholstery styles: plain, button-back, diamond stitch, or ribbed.



Wood Finish

Select legs in one of our ten standard wood colours, from whitewash to dark wenge.



Finishing Touches

The details make all the difference - add piping, contrast stitching, or decorative studding.

Design Details

Product: Aztec Side Chair

Vibe: Mixed Materials

Finishing Touch

To complement the dark green hue of the faux leather on the chair's seat, we've added contrast stitching in a lighter shade.





I'm customisable

Aztec 2 Seater Sofa

Cute and compact, the Aztec Sofa has been designed for socialising and can make a real statement when upholstered in eye-catching fabrics.

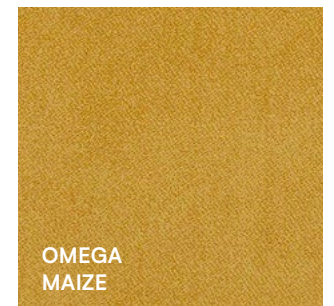
Design Details

Product: Aztec Sofa

Vibe: Jungle
Glamour

Fabric Choices

For the seat and inner back of the sofa we chose a sunny shade of mustard yellow velvet. For a real design declaration, we upholstered the back of the sofa with an amazing jungle print fabric.



Finishing Touch

As a final flourish we edged the sofa with slim piping in the mustard yellow velvet. A simple addition that adds a lot of style.

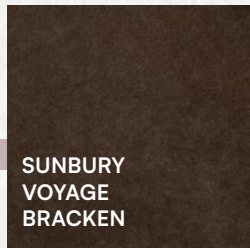
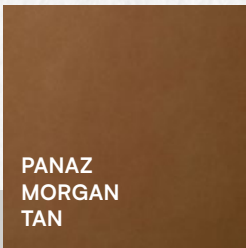
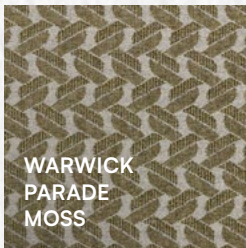
See page 35 for technical specifications



View full range - eclipsefurniture.co.uk

Call our experts - 01452 336 520





colour mood
CLASSIC NEUTRALS

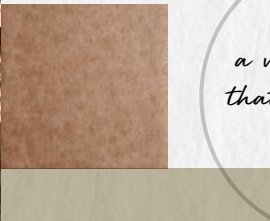
Neutrals can be a great choice for hospitality interiors due to their understated sophistication. Cream, tan, warm grey, and copper are combined in an elegant palette that can be layered with subtle texture and pared-back pattern.



concrete is a great way of adding texture to neutrals



copper is a versatile metal that adds warmth to natural shades



Soft Seating

I'm Customisable... from plains to patterns

Our collection of custom-made soft seating includes sofas, sofa beds, armchairs, and cocktail chairs. All handcrafted in the UK or EU, soft seating can add sumptuous comfort and designer style to a venue. Even better, you can customise the furniture to fit your brand identity by upholstering in your choice of any commercial-grade fabric or leather.

Kineton Sofa



Fabric Choice

The contemporary square shape of the sofa was the perfect base for a playful pattern. We chose a fun freehand check but kept it neutral to suit any style of interior.

CRAYON
RECYCLED
NATURAL

See page 35 for technical specifications



How you can customise Soft Seating:



Fabric Choice

Choose any contract-grade fabric for an 'all over' design or mix & match different materials on one product.



Leg Options

The legs on our soft seating ranges are either black metal or a choice of three wood colours.



Finishing Touches

The details make all the difference - add piping or contrast stitching for a designer touch.

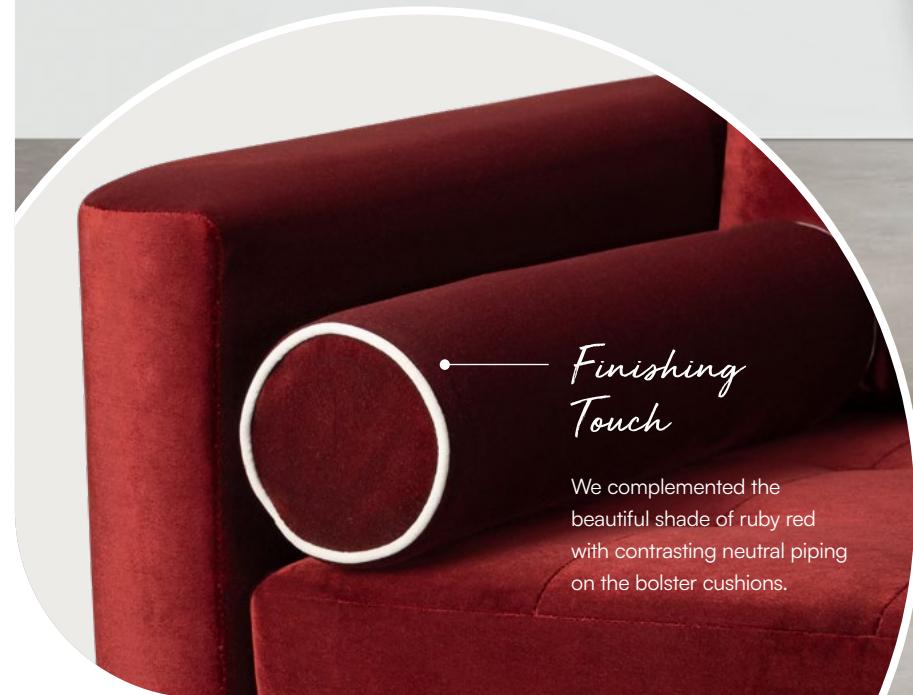
Norton Sofa

The Norton has a Mid-Century vibe with slim, angled arms and sleek metal legs. The stylish sofa would make a statement in any type of interior.



Elkstone Sofa

With generous proportions and stylish retro-inspired curved arms, the Elkstone Sofa has a beautifully upholstered single seat cushion with blind button detail. Curved solid beech feet and round bolster cushions add style.



Finishing Touch

We complemented the beautiful shade of ruby red with contrasting neutral piping on the bolster cushions.



Design Details

Product: Hilcot Sofa

Vibe: Classic Cool

Hilcot Sofa



See page 35 for technical specifications



Fabrics

Because it will never go out of fashion, classic style is a great choice for hospitality interiors. We've given the sofa a contemporary twist by choosing a traditional houndstooth fabric in a soft blue and grey colour way.



Discover More

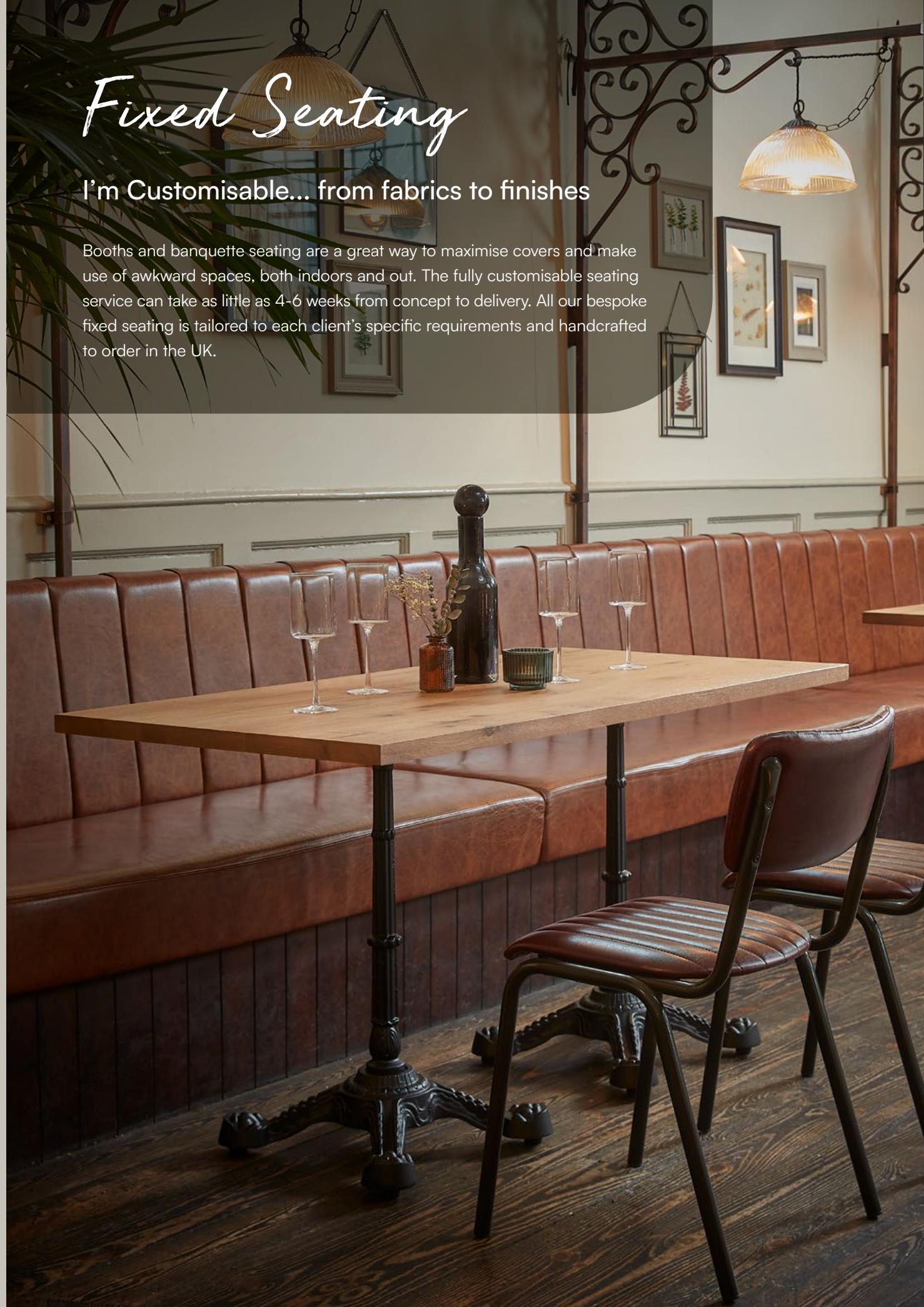
Visit our website to discover the full range of sofas, sofa beds, armchairs, and cocktail chairs.



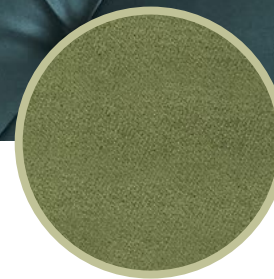
Fixed Seating

I'm Customisable... from fabrics to finishes

Booths and banquette seating are a great way to maximise covers and make use of awkward spaces, both indoors and out. The fully customisable seating service can take as little as 4-6 weeks from concept to delivery. All our bespoke fixed seating is tailored to each client's specific requirements and handcrafted to order in the UK.

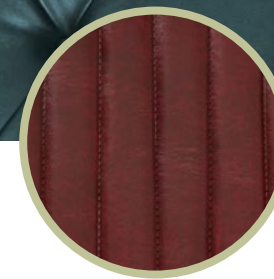


How you can customise Fixed Seating:



Fabric Choice

Upholster the fixed seating in your choice of any commercial-grade fabric or leather.



Upholstery Styles

Add interest with styles such as classic fluted, button-back, deep rolls, or scallop detail.



Base Options

Decide on a plinth base or legs in wood or metal. A variety of styles and finishes are available.



Capping Details

Options include wood or laminate and can incorporate an opening for your electrical sockets.



Discover More

Head to our website to discover more about our fixed seating service for indoors and out.



Indoor Tables

I'm Customisable... from top to bottom

Turn the tables on predictable furniture by opting for custom details that will have guests admiring your eye for design and ordering just one more drink. Give your commercial tables the custom treatment from their tops to their bases.

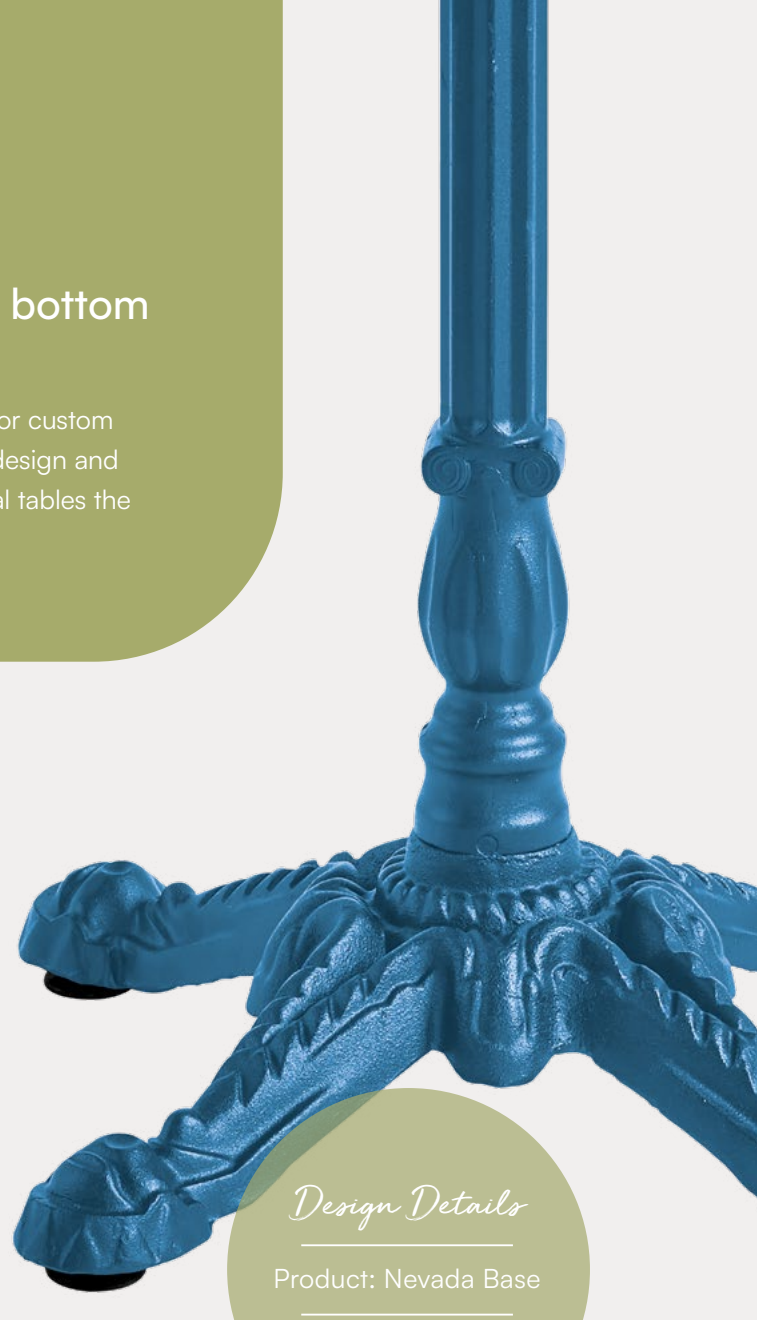


I'm customisable

Table Bases

Our wide range of metal table bases for indoors and outside give you the opportunity to mix and match with your choice of table top to get the perfect combination for your venue.

But now you can make a statement by powder-coating any table base in a RAL colour of your choice. Will you go bold and modern or stay subtle and classic?



Design Details

Product: Nevada Base

Vibe: True Blue



Size Choice

Choose from round, square, or rectangle in sizes up to 150x300cm.

Omega Table Tops

Available in Carrara or Dark Marble effect laminate, our Omega Table Tops feature gold ABS edging, and are an ideal way to achieve a luxury marble look at a fraction of the cost.

The heat-resistant, low-maintenance tops are a great choice for hospitality venues and can be manufactured in the perfect size for your space.

Solid Ash Table Tops

Our Solid Ash Table Tops are crafted from high-quality timber from managed sources.

The 25mm thick tabletops provide a durable and attractive surface which can be paired with your choice of table base and can be customised to craft a unique piece of furniture to complement your venue.

Size Choice

Choose from round, square, or rectangle in sizes up to 150x300cm.



Stain Options

Choose from our ten standard wood colours or a clear lacquer to match your table tops to your interiors.



Edge Profile

Change the shape of your table edges with a range of profiles.

Square Edge

Incut Edge

Convex Edge

Arised Edge

New Edge

45 Degree

Full Round

47 Degree

Pencil Round

Pencil Round Top and Bottom

Step and Round



*Customise our
exclusive brands*

Siesta exclusive

Siesta Exclusive furniture is available in a range of contemporary colours, but if you want to add your own personality to the chairs or tables, you can get any piece crafted in a RAL colour of your choice. To make the furniture fit your brand perfectly, you can even get a laser-printed logo or custom badge added.



FLEXFURN
unfold magic

Flexfurn already has versatility on its side with interchangeable table tops and seat pads on many models, however the design team are happy to customise their furniture to fit your brand perfectly - just let us know what you're looking for.



Totally Bespoke

I'm Customisable... and completely yours

If customising our current furniture doesn't offer the unique style that you're after, we're happy to work with you on substantial projects which require bespoke furnishing solutions that are truly aligned to your brand. Our innovation team has considerable experience in sourcing or designing a piece of furniture that's perfect for you and your space, something that won't be seen in any other restaurant, hotel, bar, or hospitality venue.

We always start the process with a consultation, so we can delve into the details of exactly what you're looking for - or if you're not entirely sure what you want, we're happy to make some suggestions. We'll then produce mood boards or design ideas for your approval before prototyping and sampling. When everyone is happy with the beautifully bespoke furniture, we'll put it into production, and our dedicated in-house team will carefully deliver it to your venue.

“

Bespoke furniture
will elevate any venue
into a designer-
inspired destination.

”



Let's create something extraordinary together...





Technical Specifications

Fabric Requirements

We have direct relationships with fabric mills and manufacturers, so can source your perfect fabric if you give us an idea of what you're looking for. If you have something specific in mind, we're happy to create a COM (customer's own material) order, and will purchase the chosen fabric on your behalf as long as it meets with industry. The following tables show how much fabric or leather is needed for our individual pieces of customisable furniture.

| | | Fabric Requirement (lm) | | | | Leather Requirement (m2) | | | |
|---------------------------|-----|-------------------------|----------------|----------------|------------------|--------------------------|----------------|----------------|------------------|
| | MOQ | Seat Pad | Inner Back Pad | Outer Back Pad | Complete Product | Seat Pad | Inner Back Pad | Outer Back Pad | Complete Product |
| Tavo Side Chair | 20* | 0.3 | 0.1 | 0.1 | 0.45 | 0.5 | 0.2 | 0.2 | 0.7 |
| Tavo Armchair | 20* | 0.3 | 0.1 | 0.1 | 0.45 | 0.5 | 0.2 | 0.2 | 0.7 |
| Tavo Mid Height Bar Stool | 20* | 0.3 | 0.1 | 0.1 | 0.45 | 0.5 | 0.2 | 0.2 | 0.7 |
| Tavo Bar Stool | 20* | 0.3 | 0.1 | 0.1 | 0.45 | 0.5 | 0.2 | 0.2 | 0.7 |
| Style Stool | 20 | 0.2 | - | - | 0.2 | 0.45 | - | - | 0.45 |
| Selma Armchair | 20 | 0.5 | 0.45 | 0.55 | 1.5 | 0.6 | 0.6 | 0.55 | 1.6 |
| Darwen Lounge Chair | 50 | 1.1 | 0.9 | 0.7 | 3 | 1.25 | 1.25 | 1.25 | 3.7 |

*50 MOQ for Tavo seating with any wooden element unless choosing a Tavo Stock stain. This removes the MOQ for non-upholstered chairs and stools.

| | | Fabric Requirement (lm) | | | | Leather Requirement (m2) | | | |
|-----------------------|-----|-------------------------|----------------|----------------|------------------|--------------------------|----------------|----------------|------------------|
| | MOQ | Seat Pad | Inner Back Pad | Outer Back Pad | Complete Product | Seat Pad | Inner Back Pad | Outer Back Pad | Complete Product |
| Aztec Side Chair | 20 | 0.5 | 0.6 | 0.65 | 1.5 | 1 | 0.5 | 0.6 | 1.6 |
| Aztec Armchair | 20 | 0.5 | 0.6 | 0.65 | 1.5 | 1 | 0.7 | 0.85 | 2 |
| Aztec Bar Stool | 20 | 0.5 | 0.6 | 0.65 | 1.5 | 1 | 0.7 | 0.85 | 2 |
| Aztec Lounge Armchair | 20 | 0.5 | 0.85 | 1.3 | 2.5 | 1.1 | 1.15 | 1.5 | 3.5 |
| Aztec 2 Seater Sofa | 20 | 1.25 | 1.2 | 1.5 | 3.6 | 1.7 | 1.55 | 1.8 | 3.6 |

Standard Wood Stains

Our ten standard wood stains are a curated range of classic and contemporary shades. Choose your favourite to customise your chosen chairs' frame or legs.



Tavo Stock Stains

In addition to our standard wood colours, for Tavo furniture we offer a range of four stock stains that will remove the MOQ when choosing a Tavo chair or stool without upholstered elements.



It's time to get creative!

If you're interested in creating customised furniture, then let's start a conversation. Get in touch, and we'll arrange a consultation to find out exactly what you're looking for. We have a large range of stock products that can be customised, so come ready with your ideas and we can work together to put your stamp on our high-quality commercial furniture.

If seeing is believing, why not visit our showroom? We'd be delighted to welcome you in person or give you a virtual tour, showing you our wide range of products and examples of furniture that's we've customised.

Let's work together to create unique furniture that's perfect for your venue.

@ sales@eclipsefurniture.co.uk

01452 336 520

eclipsefurniture.co.uk



Join us on social media to keep up to date with the latest trends and innovations...



eclipse

— FURNITURE —



sales@eclipsefurniture.co.uk



01452 336 520



eclipsefurniture.co.uk



Furndeco Limited (Company No. 11023736) t/a Eclipse Furniture, 2 Marconi Drive, Quedgeley,
Gloucester GL2 2AH, VAT Reg No. 281 887 457